

Section-A

I) Answer the following questions in one or two sentences: -

- 1) What is a super sense?
- 2) Define the term germination.
- 3) The function of the cotyledon_____.
- 4) How can you help in protecting the animal habitat?
- 5) What will happen if the natural habitat of animals is not conserved?
- 6) How does the shape of the body of birds help them to fly?
- 7) State the two features which help dispersal of seeds by wind:

_____.

II) Answer the following questions in two or three sentences: -

- 1) What is the difference between rabi and kharif crops? Give 2 examples of each.

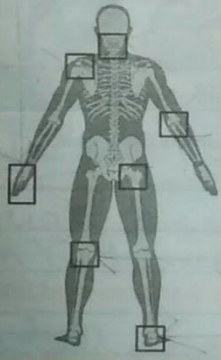




- 2) How do insects breathe?
- 3) Write the difference between movable and immovable joints. Give two examples for each.
- 4) What are sniffer dogs? How do they help humans?
- 5) Draw a diagram to show the stages of germination.
- 6) What do you understand by the term vegetative propagation? How can it happen both naturally and artificially?

_____.

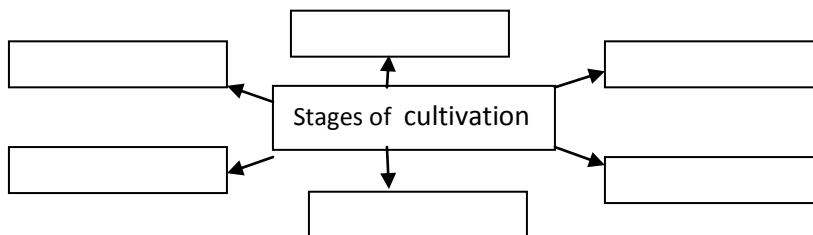
- 4) Draw a diagram of the human brain and label its three main parts.

Section-B



- 1) Match each joint shown in the skeleton with its type and write how it works?

	Type of joint	Where is it present and how does it work?
		
		
		
		

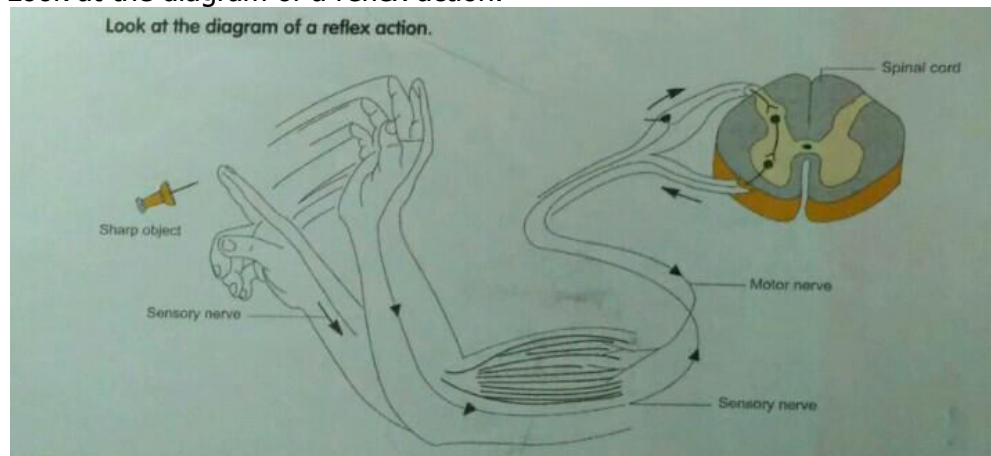
- 2) Complete the table



- 3) Write the name of the animals and complete the table.

Animal	How is its sense of sight different from humans?	How does it help the animal survive?
		
		

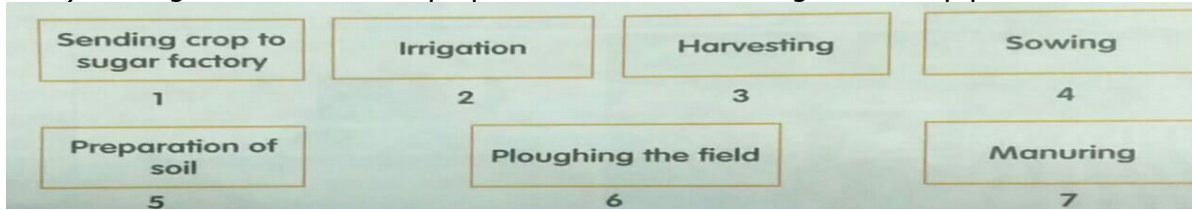
- 4) Look at the diagram of a reflex action.



i) Give two examples of reflex action.

ii) Why is blinking of eye a very fast action?

5) Arrange the boxes in the proper order to show the sugarcane crop production.



6) Fill in the blanks:-

1. _____ part of the seed forms the root of the plant.
2. A nerve is made up of many _____.
3. _____ cultivation stage allows the seed to get required air to germinate.
4. _____ is an example of hinge joint.
5. The natural environment in which an animal lives is called _____.

7) Match the following:-

Column A

- A) Rice
- B) Spinal cord
- C) Ball and socket joint
- D) Brain stem
- E) Fish

Column B

- a) Gills
- b) Breathing
- c) Shoulder
- d) Rope-like structure
- e) Monocot